

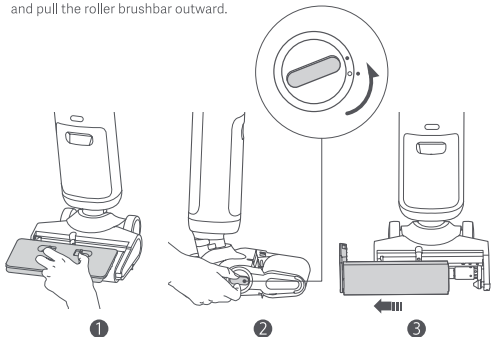
xiaomi TruClean W10 Pro Wet Dry Vacuum Brush



Replacing the Roller Brushbar

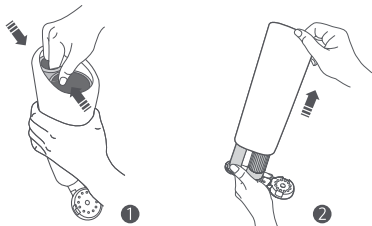
Read this manual carefully before use, and retain it for future reference.

1. Pinch both roller brushbar cover release buttons to remove the roller brushbar cover. Then turn the roller brushbar lock counterclockwise until it is unlocked, and pull the roller brushbar outward.

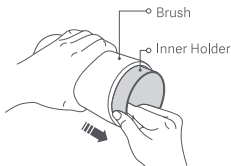


Note: Illustrations of product, accessories, and user interface in the user manual are for reference purposes only. Actual product and functions may vary due to product enhancements.

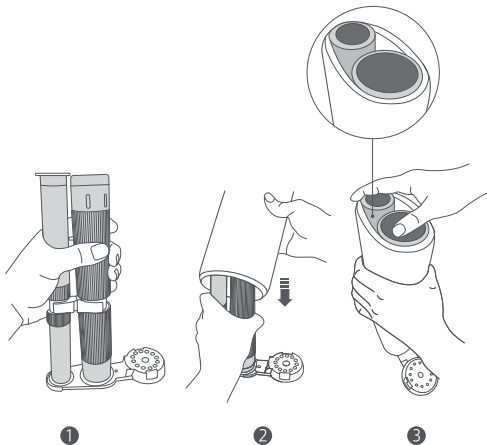
2. Grasp the top of the roller brushbar holder as illustrated, and pull the old brush outward to remove it.



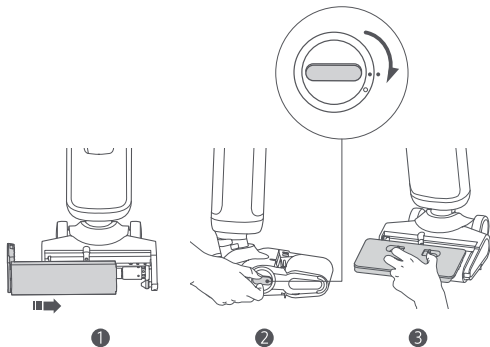
3. Remove the inner holder inside the new brush.



4. Hold the roller brushbar holder by its upper part, put it into the new brush, and press them into place.



5. Install the roller brushbar onto the floor brush, and turn the roller brushbar lock to the locked position. Then reinstall the roller brushbar cover.



Specifications

Name: Xiaomi TruClean W10 Pro Wet Dry Vacuum Brush

Model: B302GL-GSB

Net Weight: 95 g

Item Dimensions: 75 × 75 × 228 mm

Manufactured for: Xiaomi Communications Co., Ltd.

Manufactured by: Beijing Shunzao Technology Co., Ltd.

(a Mi Ecosystem company)

Address: 101, 1st floor, Building1, No.16, Anningzhuang East Road, Haidian District,
Beijing, China

For further information, please go to www.mi.com

User Manual Version: V1.0

Importer:

Beryko s.r.o.

Pod Vinicemi 931/2, 301 00 Plzeň

www.beryko.cz

